



, Princes Court,
88 Brompton Road, SW3

£1,000 Per Week,

NAPIER WATT

T: 0207 935 0011
E: enquiries@napierwatt.co.uk
W: napierwatt.co.uk

35 Berkeley Square, Mayfair, London, W1J 5BF







Description

A bright, recently decorated two-bedroom, two-bathroom apartment located on the fifth floor (with lift) of this purpose-built apartment block opposite Harrods. The property benefits from a spacious reception room / dining area, separate kitchen and two double bedrooms, both with en-suite bathrooms. Princes Court benefits from 24 hour portorage and security and is located on the Brompton Road directly opposite Harrods and is ideally located for Knightsbridge, Sloane Street and Hyde Park. The property would make an ideal family residence, pied-à-terre. Available, furnished.

2 Bedrooms : 2 Bathrooms : Communal Heating : Lift : 24-Hour Porter : Council Tax Band G

Key Features

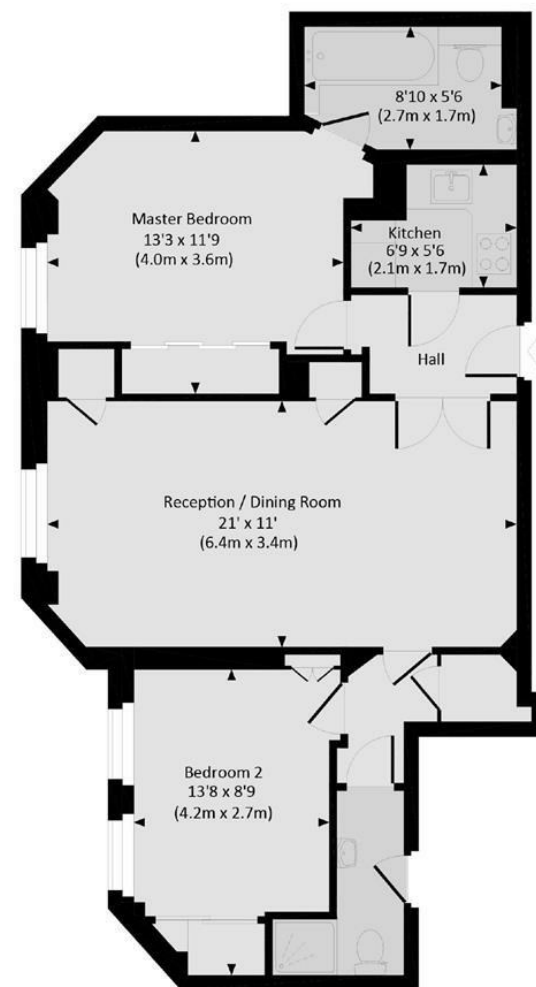
- 24 HOUR PORTERAGE
- OPPOSITE HARRODS
- ALL NEW FURNITURE
- AVAILABLE NOW
- 5th FLOOR - LIFTS
- NEWLY DECORATED
- NEW WOOD FLOOR

Terms

Fees & Charges: Tenancies exceeding £100,000 Per annum £480 inc VAT, Tenancies where a company is a tenant £480 Inc VAT.

PRINCES COURT, SW3

Approx. gross internal area
711 Sq Ft. / 66.1 Sq M.



FIFTH FLOOR

IMPORTANT: We would inform prospective purchasers that these sales particulars have been prepared as a general guide only. A detailed survey has not been carried out, nor the services, appliances and fittings tested. Room sizes should not be relied upon for furnishing purposes and are approximate. If floor plans are included, they are for guidance only and illustration purposes only and may not be to scale. If there are any important matters likely to affect your decision to buy, please contact us before viewing the property.